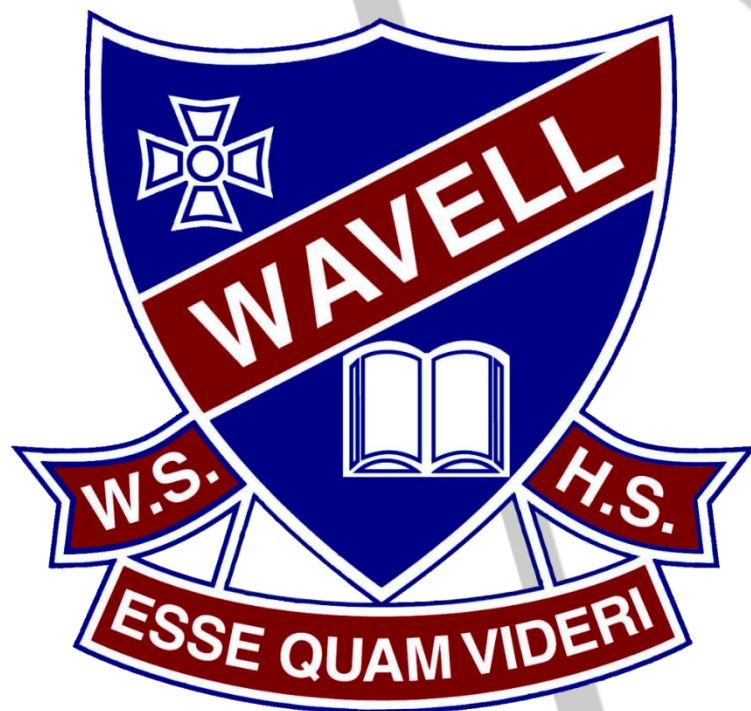


INSTRUMENTAL MUSIC INFORMATION HANDBOOK



2017



Contents

➤ For Busy People - What You Really Need to Know	2
➤ Aim	3
➤ Costs of Participation	3
➤ Instrumental Music Staff	4
➤ How to pay Levies	5
➤ Membership of school instrumental ensembles	5
➤ Ensembles and Rehearsals	6
➤ Uniforms	6
➤ Lessons	7
➤ Instruments	7
➤ Playing two instruments	8
➤ Communication	8
➤ Band and Music Committee	8
➤ Removal & Re-entry	8
➤ IM KICKS - Kick Start Program	9
➤ Music Tour	9
➤ Other Performances	9
➤ Practice	10
➤ Music Scholarships	11
➤ Performance Dates 2017	13



Symphonic Wind Ensemble

FOR BUSY PEOPLE!

WHAT YOU REALLY NEED TO KNOW

Lessons & Ensembles

- Lessons are held during school time on a rotational basis
- Lesson duration is 35 minutes
- Lessons are based on Qld IM Curriculum
- Ensembles rehearse outside school hours (*see page 7*)
- Membership of an ensemble is compulsory (*beginners are exempt until proficient*)
- Small instruments are available for a one year loan (*depending on requirements*)
- Large instruments are available for longer periods (*depending on requirements*)
- Students are required to practice at home

Costs (How much do I need to pay?)

- All Students - \$60.00 Instrumental Music Levy - If paid in term 1 or \$70.00 if paid after term 1.

Plus:

- \$30.00 extra for Percussion and Bass Guitar students
- \$70.00 extra for instrument hire (*if using a school instrument*)

Band Uniform (All Ensembles)

- Black long sleeve microfibre shirt (*as available from Lowes*)
- Black trousers or long black skirt
- Black shoes and socks/stocking
- Ensemble tie (provided)

Paperwork (What do I need to fill out and return?)

- Loan Agreement Form (*Issued by teacher if borrowing an instrument from the school*)

What can I do to help?

- Attend performances
- Join the Band and Music Committee (*See page 7*)
- Monitor home practice and encourage your student

How to Contact us:

Telephone: 07 3350 0323

Fax: 07 3350 0300

Director of Instrumental Music:

Alisa Jones

ajone55@eq.edu.au

THE AIM OF THE INSTRUMENTAL MUSIC PROGRAM AT WAVELL STATE HIGH SCHOOL

Our Aims are:

- To instil in students an appreciation and love of music through participation in bands and ensembles.
- To develop the students musical, social and personal awareness through participation in instrumental music instruction, ensemble rehearsal and performance.
- To develop a lifelong appreciation and enduring love of music.

Wavell State High School fosters the all-round development of students through academic, sporting and cultural activities. The motto of the school, “Esse Quam Videri”, is translated as “to be rather than to seem to be”. This motto is reflected in the school’s aim and philosophy whereby all students are encouraged to strive for and achieve their very best.

Wavell State High School boasts a strong Instrumental Music program. Since the program’s inception in 1972, the quality of musical expertise has continued to grow, thus maintaining a strong tradition of excellence within the community. Wavell bands have a strong performance ethic, performing both at school and at many community events throughout the year.

COST OF PARTICIPATION

The following charges apply:

1. **Instrumental Music Levy** - All Students – \$60.00 (*If paid in term 1*)
or \$70.00 if paid after term 1. *See Appendix B*
2. **Instrument Maintenance Fee** - \$70.00 per year
(*payable by all instrumental students borrowing a school instrument*)
3. **Percussion / Bass Guitar Maintenance Fee** - \$30.00 per
4. **Music Tour** – Bi-annually (*Senior Ensembles*)
5. **Uniform** – Ties and Band Folders to be purchased from the music department TBC

Blacks are to be purchased separately.

INSTRUMENTAL MUSIC STAFF

Mrs. Alisa Jones – Director of Instrumental Music / Woodwind Specialist



Mrs. Jones has a Bachelor of Arts Music and Post Graduate Diploma of Education and has been employed by Education Queensland for the past 20 years. Mrs. Jones has developed a reputation as a conductor and has been a director of the Griffith University Young Conservatorium - Symphonic Wind Ensemble, the associate director of the Queensland State Youth Wind Orchestra, and guest conductor of the Percy Grainger Orchestra at the Queensland Conservatorium State Honours Ensemble Program, both in North Queensland and in Brisbane. She has also been a guest conductor at the Musical Outstanding Student Program (MOST). Mrs. Jones has also lectured in orchestral conducting at Griffith University Queensland Conservatorium and is kept busy as a guest conductor travelling all over Queensland rehearsing ensembles and workshops with students and teachers.

Mrs. Jones has also been heavily involved in the world of community music making and has been the musical director of two community concert bands. She is the newly appointed musical director of one of Australia's leading wind ensembles: Queensland Wind and Brass. She has also held the position state secretary of the Australian Band and Orchestra Directors Association (ABODA). The involvement in this organisation enables her to run professional development seminars for other music teachers as well as adjudicate at many competitions and festivals throughout Queensland and New South Wales. Her current role with Education Queensland includes multi instrumental teaching, conducting and project officer for the new Instrumental Music Outreach Program as well as being on the Music Interview Panel for graduating teachers. She has been at Wavell SHS since Term 2, 2012.

Ms. Jennifer Baldwin – Brass Specialist



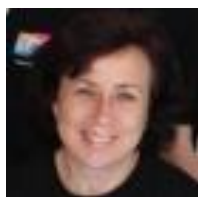
Mrs. Baldwin has taught Brass instruments since 2015 at Wavell SHS. A graduate from Queensland University of Technology, she has a Bachelor of Music and a Bachelor of Education. Mrs. Baldwin first taught primary school classroom music before switching to instrumental music. From 2007 she taught in the Gladstone region. One of her greatest achievements from this time was forming and directing the Tannum Sands SHS Marching Band. While in Gladstone Mrs. Baldwin was an active member of the Gladstone Musical Society. She was a regular orchestral musician in a number of stage shows on both Trumpet and French Horn. She is heavily involved with community bands and conducts Bayside Brass.

Mr Sam Mitchell - Percussion Specialist



Mr Mitchell graduated from Queensland's University of Technology in 2006 with a Bachelor of Music and from the University of Southern Queensland in 2011 with a Graduate Diploma of Teaching and Learning. He has taught drums and percussion for 15 years in various music schools and privately around the Greater Brisbane area. Mr Mitchell has also taught as a primary school teacher with Education Queensland in Brisbane. In addition to Wavell SHS, he is currently teaching Percussion at Kelvin Grove State College and Kedron State High. As a performer, he has toured nationally and recorded with many bands and artists and is in high demand as a session player. He is currently playing and writing music with Michelle Xen, Cheap Fakes, Mr Maps and the Chris Poulsen Trio.

Ms. Leanne Piggott – String Specialist / Classroom Music Teacher



Mrs. Piggott teaches Strings, Classroom Music, Music Extension and directs the "Rapport" Vocal Group. She is a graduate of the Queensland Conservatorium of Music and has performed with the Brisbane Symphony Orchestra, the Brisbane Chorale and as a pit musician and conductor with many musical theatre companies. She has adjudicated Eisteddfods and music competitions across the state. Mrs. Piggott has taught with Education Queensland for the past 25 years and has been at Wavell SHS since 2003.

HOW TO PAY LEVIES

All Instrumental Costs can be paid by Cash, Cheque or Direct Deposit.

You will be sent an invoice for Instrumental Music after week 4 of Term 1

MEMBERSHIP OF SCHOOL INSTRUMENTAL ENSEMBLES

Once proficient, students must be part of an ensemble. Students involved in the ensembles must attend lessons.

Entry into Symphonic Wind Ensemble, Big Band, Percussion Ensemble and Rapport is by audition/invitation only.

Please note that:

- a. Students must attend all rehearsals as directed by their conductors. These are generally before and after school. Punctuality is vital.
- b. Attendance at all performances, both within the school and in the community are mandatory for all students involved in performing ensembles. Students who miss performances without probable cause, will have their position in the ensemble reviewed.
- c. Unavoidable absence must be explained by note or phone call as soon as possible.
- d. Students must practice at home. Practice must include the work set by individual teachers and ensemble parts set by conductors.
- e. Students must commit to the full school calendar year. Orchestras, bands and ensembles depend heavily on the participation of **every member, all the time.**

This discipline we believe will contribute not only to a student's musical development, but to his/her total personal development as well.

ENSEMBLES AND REHEARSALS

- Wavell offers participation in a wide variety of instrumental ensembles such as:

ENSEMBLE	REHEARSAL DETAILS	
Symphonic Wind Ensemble	Monday 7:20am	Alisa Jones
Concert Band	Thursday 7:20am	Jenny Baldwin
Wavell Winds (yr 7 Band)	Monday 3:15pm – 4:15pm	Alisa Jones
Big Band	Wednesday 7:20am	Alisa Jones
Stage Band	Thursday 3:15pm – 4:00pm	Alisa Jones
Percussion Ensemble	Friday 7:20am	Sam Mitchell
Drum Line	Friday Lunch	Sam Mitchell
String Orchestra	Tuesday 7:45am	Leanne Piggott

ENSEMBLE UNIFORM

- All Ensembles have a set uniform comprising a long sleeve microfibre black shirt, black trousers or long skirt, black shoes and black socks/stocking. Microfibre shirts can be purchased at Lowes clothing stores.
- Band Ties are available for purchase from the music department and must be worn with the ensemble blacks
- Each students must purchase a school ensemble folder. They are available from the music department
- Students are expected to adhere to the dress code for all performances.



String Orchestra



Concert Band

LESSONS

- Lessons occur once per week during class time on a **rotating** timetable.
- Lesson timetables are displayed on the Band Room noticeboards and students are given a copy for their personal use.
- Attendance at Instrumental lessons is **compulsory**. Attendance sheets are signed by the instrumental teacher after every music lesson. It is the students' responsibility as they return to class, to show their class teacher the attendance sheet.
- Lessons are based on the Queensland Instrumental Music Curriculum
- All students will sit a practical assessment and will receive a report at the end of each semester.
- Where students need to change a lesson they are expected to let the Instrumental Music Teacher know **before** the lesson. Lessons can only be altered if there is an assessment clash.
- Failure to attend lessons will affect the student being allowed to perform in Ensembles and also affect their assessment results.

INSTRUMENTS

- Beginning students will be assigned a school instrument by the Instrumental Music Teacher with regard to the student's previous music experience, aptitude, the program needs, availability of instruments and teacher time.
- A loan agreement must be signed by the parents and returned to the Director of Instrumental Music.
- Students who borrow a school instrument are required to pay an Instrument Maintenance Fee of \$70 per year.
- The loan period on smaller instruments is 12 months larger instruments can be hired for longer periods.

Smaller instruments include:

Flute, Clarinet, Alto Saxophone, Trumpet, Trombone, Viola and Violin.

Larger instruments include:

Tenor Saxophone, Baritone Saxophone, Euphonium, Tuba, Cello, and Double Bass.

- In the event where demand exceeds the number of instruments available for hire, large instruments will be allocated from the earliest date on enrolment forms. If no more instruments are available from the school, parents may need to source an external provider to hire instruments with advice procured from the Instrumental Music Teacher.
- As Percussion and Bass Guitar students use school equipment, they are required to pay a Maintenance Fee of \$30.00 per year.

PLAYING TWO INSTRUMENTS

- Some students may wish to learn two instruments. This will be negotiated on an individual basis and be reliant on instrument availability, program needs and teacher time.

COMMUNICATION

- The majority of communication is via email. Please ensure the school has your most current email address and please notify if there are any changes to your contact information. A collective data base of emails will be generated to send information home.
- There is a notice board on the Band Room entry on which notices and other information is posted.
- Announcements are made during rehearsals. Letters are sent home in hard copy and/or email for specific commitments such as performances.

BAND AND MUSIC COMMITTEE

The parent support group is called the Band and Music Committee. (BAMC)

- Meetings dates are listed in both the school calendar and newsletters and are held in the Band Room at 7:30pm
- The committee is a sub-committee of the P & C and is the essential fund-raising group for the Instrumental Music Program. It also supports camps, concerts, catering, tours etc.
- Everyone is welcome to attend Band and Music Committee meetings. We welcome your support and assistance with various activities throughout the year.

REMOVAL FROM THE PROGRAM

Students wishing to leave the program midyear are required to complete a change of subject form. This will need to be approved by the IM teacher, Director of Instrumental Music and the Performing Arts HOD.

Students who have withdrawn from the program may apply to re-enter.

Re-entry is at the discretion of the Director of Instrumental Music in consultation with the Instrumental Music Teacher.

IM KICKS - Kick Start Day

At the start of each year all instrumental students will be required to participate in a Kick Start Program Day camp on the second Saturday of Term 1. This day camp is designed to kick start our repertoire program for the year, integrate the new students into the ensembles and provide group tutorial sessions for individualised learning.

MUSIC TOUR

Wavell bands undertake a music tour every two years.

The philosophy behind a Music Tour is:

- 1) Musical development
- 2) Personal development – the tour provides opportunities for social and personal development in areas of leadership, initiative, cooperation and responsibility.
- 3) Performance and cultural experience

The tour involves senior ensembles. Members of junior ensembles may be invited to fill a vacancy left by an unavailable senior student.

The Band and Music Committee may contribute to tour costs and will also give consideration to assisting students where financial difficulties exist.

The school reserves the right not to offer a tour in any given year.

OTHER PERFORMANCES

We have many requests for our ensembles to perform in the community, and whenever possible we accept invitations provided they fit within the school calendar. Parents and students will be advised of these as soon as details are available.

PRACTICE

A consistent routine of practice should be established by each student at the beginning of the year. It should be part of their homework timetable.

- Beginners should commence with 10 – 15 minutes practice, 5 days a week with the amount of time spent increasing as ability increases and membership in higher-level ensembles is attained.
- Parents should show and interest in their child's practice and encourage them. For instance ask your child to play for you occasionally.
- Practice routine should include warm up scales, technical work, studies and pieces (as set by the teacher), ensemble music plus some fun!
- If it is difficult to get large instruments to and from home, arrangements can be made to students to practice before and after school in a practice room in the music block (Q Block).



Junior Choir



Rapport Vocal Quintet

MUSIC SCHOLARSHIP

Wavell State High School offers four Instrumental Music Scholarships per year. This program is supported by the P& C. Each scholarship holds the value of \$500. Applicants will be required to sit an audition on their principal instrument as well as complete a detailed application form. Auditions will be in front of an experienced panel.

SCHOLARSHIP CRITERIA

Interested applicants must meet the following criteria:

- Continued enrolment at Wavell State High School in Years 7-12.
- High Academic standards
- Strong involvement in Instrumental Music lessons and ensembles
- High standard of overall musicianship
- Willingness to learn
- Play a Brass, Woodwind, Percussion or String Instrument (including bass guitar)

Please note that the school will have the right to review the progress of the scholarship recipient on occasion as it deems necessary.

SCHOLARSHIP DETAILS

Successful applicants will receive the following:

- Enrolment into Wavell State High School
- Entry into the Instrumental Music Program lesson tuition
- Entry into the Instrumental Music Program Bands and Ensembles
- Entry into the Year 7, 8, 9 Music Extension class, if desired
- \$500 credit that can be used in full or part thereof the following:
 - Private tuition on the instrument they successfully auditioned on (private teachers will need to be approved by the WSHS Instrumental Music staff)
 - Instrumental Music Levies and/or Instrument Hire
 - Other associated music costs ie. Music Tour/Camps/Excursions

APPLICATION DETAILS

Applications forms will be available on the school website and from the Director of Instrumental Music from the last Monday of term 2. Auditions will held early in Term 3 for the following year.

AUDITION REQUIREMENTS

1. Students are required to perform two pieces that show contrast and diversity and demonstrate their skill. Total performance length should be no longer than 10 minutes. Students auditioning on percussion will be required to perform on snare drum and mallets.
2. Students will be required to answer questions in relation to their musical experiences/aspirations and how they intend to contribute to the musical life of the school.
3. Students will be required to compete sight reading and some technical work suitable for their level.

Further details please contact the Director of Instrumental Music: Mrs Alisa Jones: ajone55@eq.edu.au.

PERFORMANCE DATES 2017

February 4	IM KICKS - Instrumental Music Kick Start Program Day 9am-4pm
May 21	Open Day
May 26	SHOWCASE 1 Concert A 6:00pm - 7.00pm Junior Ensembles Concert B 7:30pm – 8:30pm Senior Ensemble
June 15	IMPS - Instrumental Music Primary School Day Camp - Years 5/6/7/8 8am-4pm - School Hall
July 14	Music Scholarship Applications due
July 26	Auditions for Scholarship nominees
August 13	Kedron-Wavell RSL Concert 2pm-6pm - TBC
September 10	Nundah Village Festival & McDowall SS Fete 9:30am-1:00pm
October 20	SHOWCASE 2 Concert 7.00pm - All Ensembles
December 3	Orientation Workshop 8:00am – 3:00pm
December 4	Orientation Day Performance

These performances are compulsory for students in the relevant ensembles. Please add to your calendars.